

Compact Digital Photo Printer

Color Stream CS2



More Efficient, More Ecological, More Affordable

Most Compact & Light dye-sub printer

Superior Image Quality

The print quality is excellent without smear by utilizing a unique thermal control technology. High quality matte finish is also available.

Speedy and Reliable

More Stable, Reliable and speedy prints are realized.

More Ecological

Maximum AMP draw is 3.1A. Corresponds to Energy Star. Low waste, and jam free.

Light weight and most compact

World lightest weight less than 10kg and most compact size design are achieved.

High Mobility

Easy to carry. Can use it anywhere and anyway.

More Affordable

Enough capacity for daily use. Save your money and workload.

Features

Light
&
Compact

Half
Size
of a conventional

Energy
Saving

Matte
Print

Paper Size

5×7

4×6
6×8

Multi Cut
4×6
×2

Print Speed

4×6
11
sec



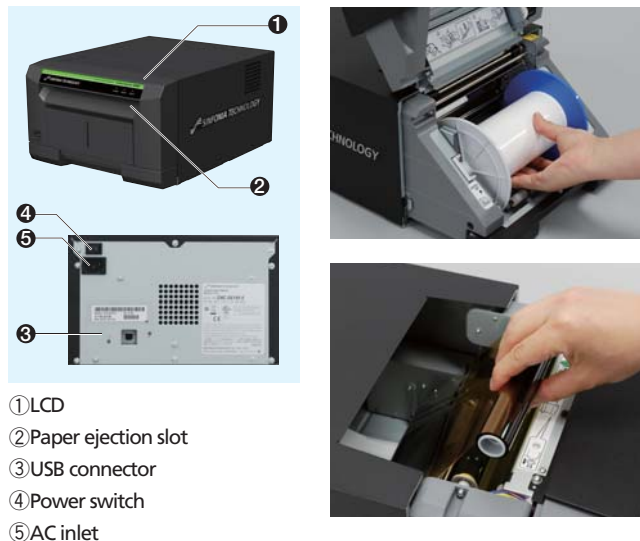
SINFONIA TECHNOLOGY

Company name changed from SHINKO ELECTRIC CO., LTD.

Compact Digital Photo Printer

Color Stream CS2

The compact design enables to carry it anywhere and use it anyway.



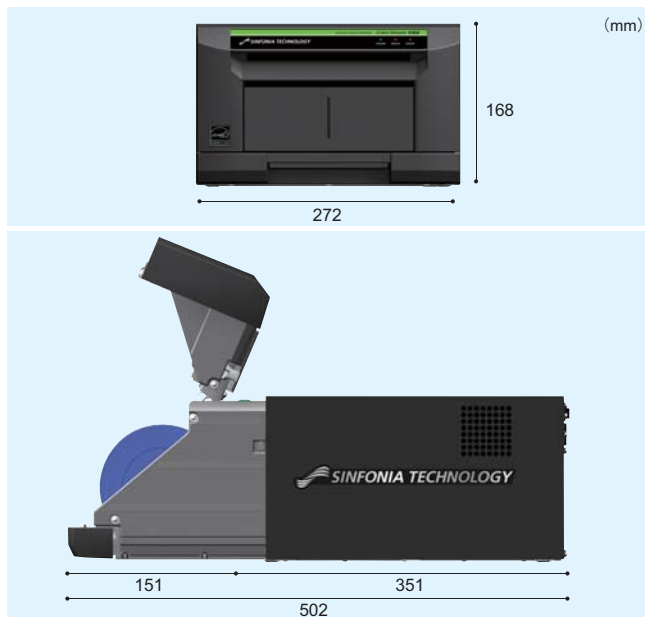
- ① LCD
- ② Paper ejection slot
- ③ USB connector
- ④ Power switch
- ⑤ AC inlet

Specifications

Model No.	CHC-S6145
Print Method	Dye Sublimation Thermal Transfer
Resolution	300dpi
Paper Size Capacity	300 prints: 102mm×152mm (4"×6")
	170 prints: 127mm×178mm (5"×7")
	150 prints: 152mm×203mm (6"×8")
Multiple print	(6"×4") ×2 with 6"×8"
Print Speed	11 seconds: 102mm×152mm (4"×6")
	17 seconds: 127mm×178mm (5"×7")
	19 seconds: 152mm×203mm (6"×8")
Ink Ribbon / Paper	YMC+OP / Roll Paper
Dimensions	272(W) ×168(H) ×351(D) mm
Weight	10Kg or less
Power Supply	AC100-240V , 50 / 60Hz Auto-switching
Power Consumption	3.1A- 1.3A
Interface	USB 2.0
Buffer Memory	32MB
Safety Standards	UL , cUL , CE
EMI	FCC ClassA , VCCI ClassA
Printer Driver	Windows XP / Vista / 7 (32bit, 64bit) , Plug in DLL

The above specifications are subject to change without notice. Windows and Windows Vista are either registered trademarks or trademarks of Microsoft Corporation in the United States and/or other countries.

Dimensions



- CAUTION!**
- Before use, read the instruction manual carefully to ensure safe operation.
 - Do not position in wet, humid, dusty or smoky environments. This may result fire, breakdown or electric shock.

Company name changed from SHINKO ELECTRIC CO., LTD.

SINFONIA TECHNOLOGY CO., LTD.

<http://www.sinfo-t.jp/eng/printers.html>

Head office: Shiba NBF Tower, 1-30, Shibadaimon 1-chome, Minatoku, Tokyo, 105-8564 Japan
 Phone: +81-3-5473-1819 Fax: +81-3-5473-1844

■ Company and product names in this catalog are registered trademarks.
 ■ Due to technical upgrading, design and specifications are subject to change without notice.

