

**How**  
**to Create**  
**HiTi**  
**eFrames**

**P510K**

- Step 1 Create an eFrame**
  - 1.1 eFrame Size
  - 1.2 eFrame Format
- Step 2 Bring the eFrame to Printer**
- Step 3 Photo Finishing with eFrame on**

# Step 1

## Create an eFrame

### 1.1 eFrame Size

Input the relevant number to create correct eFrame size in accordance with the table.

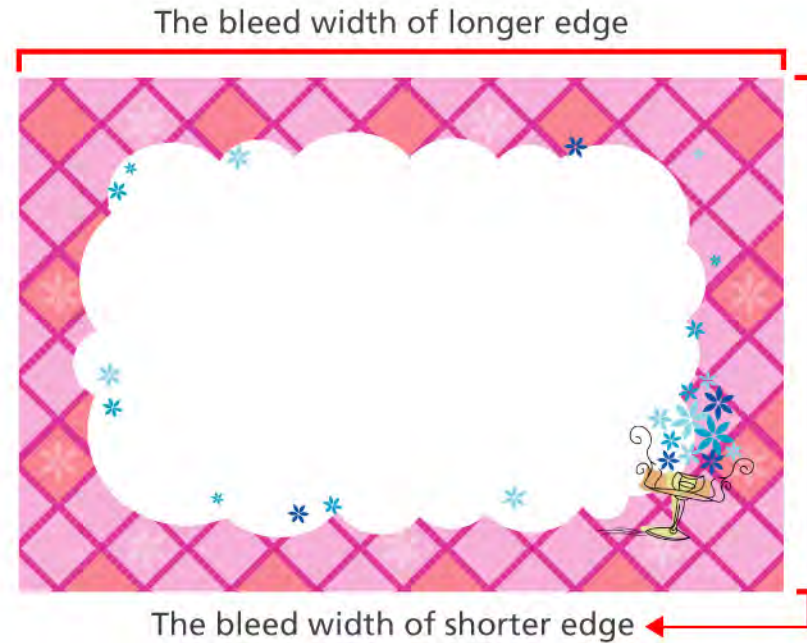
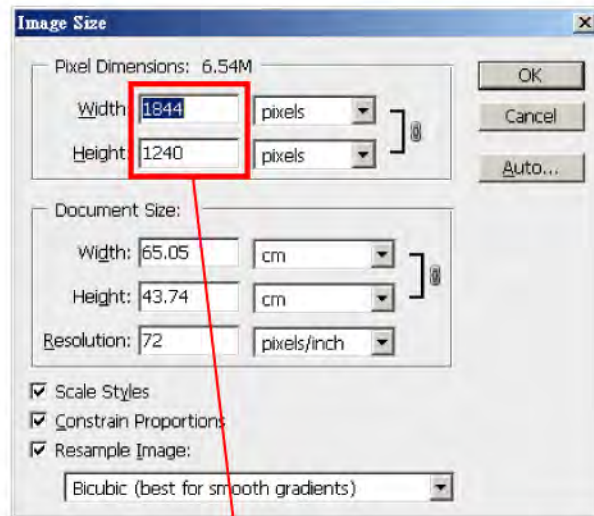


Photo size	Editing size	The bleed width of shorter edge	The bleed of longer edge
4x6	1240x1844	40/2(3.4/2mm)	44/2(3.7/2mm)
5x7	1548x2140	48/2(4.0/2mm)	40/2(3.4/2mm)
6x8	1844x2434	44/2(3.7/2mm)	34/2(2.87/2mm)
6x9	1844x2740	44/2(3.7/2mm)	40/2(3.4/2mm)

Unit pixel

# Step 1

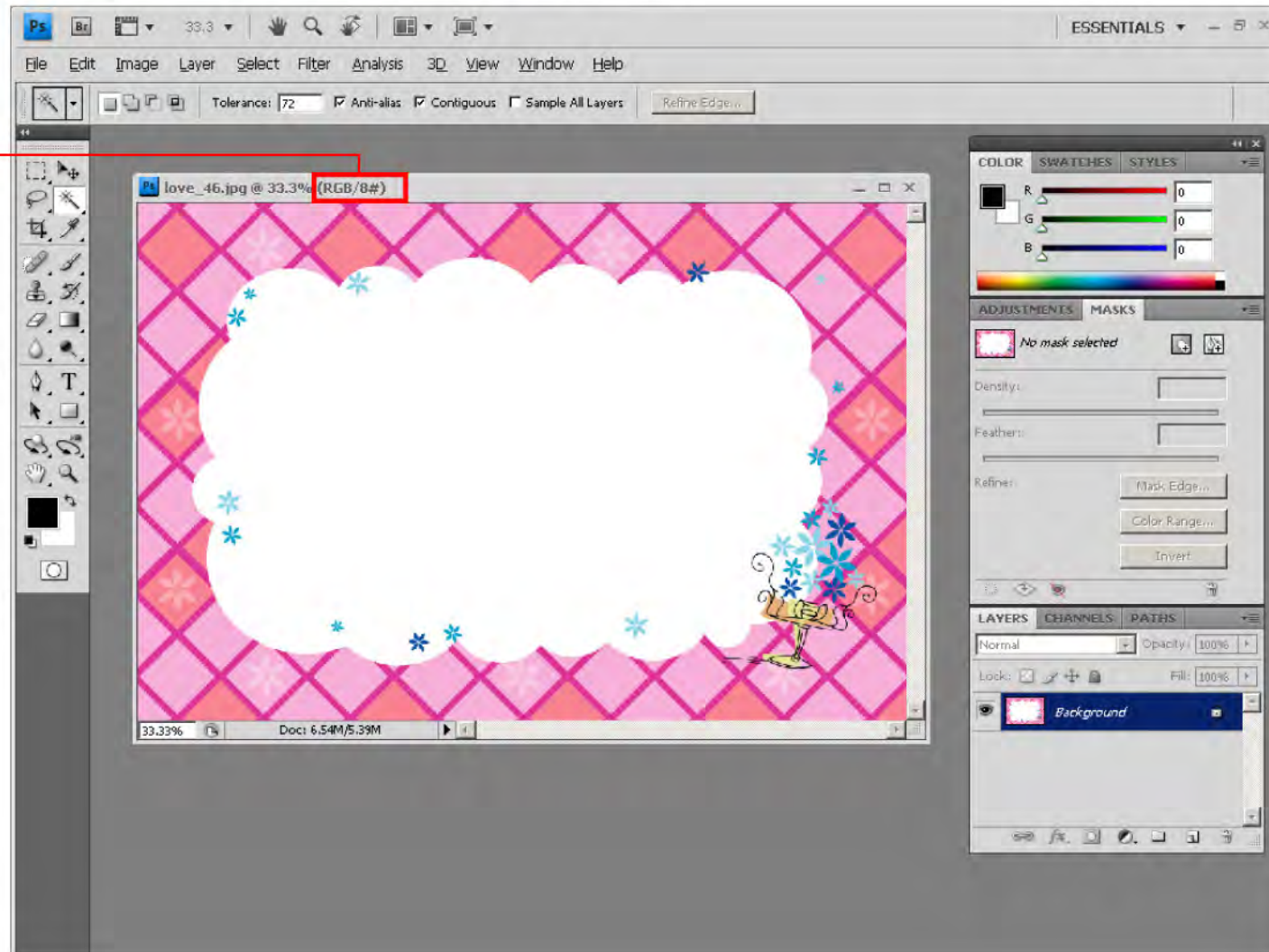
## Create an eFrame

### 1.2 eFrame format

#### ◆ Tool : Photoshop

- 1 Open a designed image in JPG format and RGB color.

RGB Slider



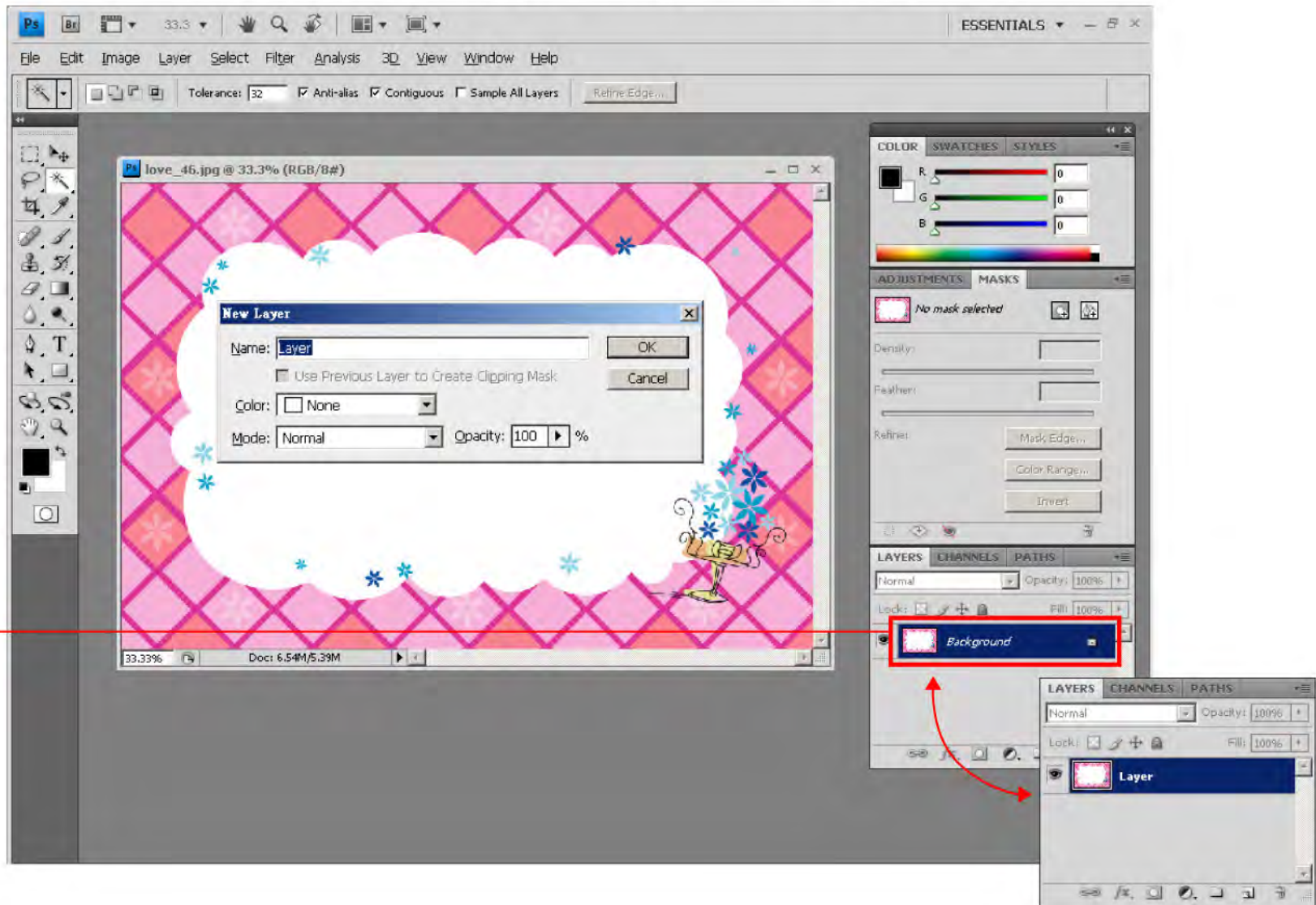


# Step 1

## Create an eFrame

### 1.2 eFrame format

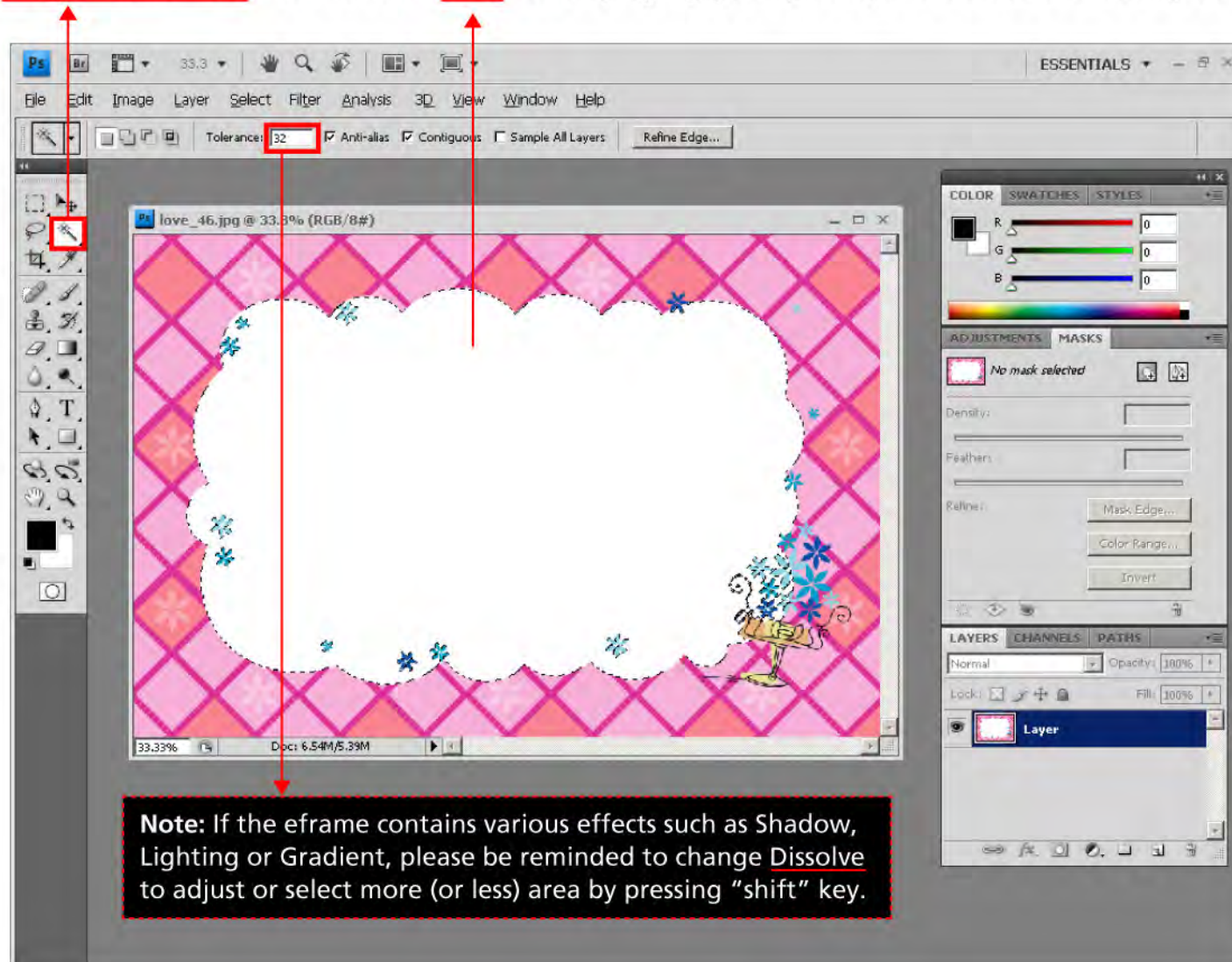
- 2 Move to the layer and click it twice to change layer name.  
( Due to the layer can not be transparency under the layer name of "Background" )



# Step 1 Create an eFrame

## 1.2 eFrame format

- 3 Use "Magic Wand Tool" to mark an area for displaying your photo, and delete the background color.



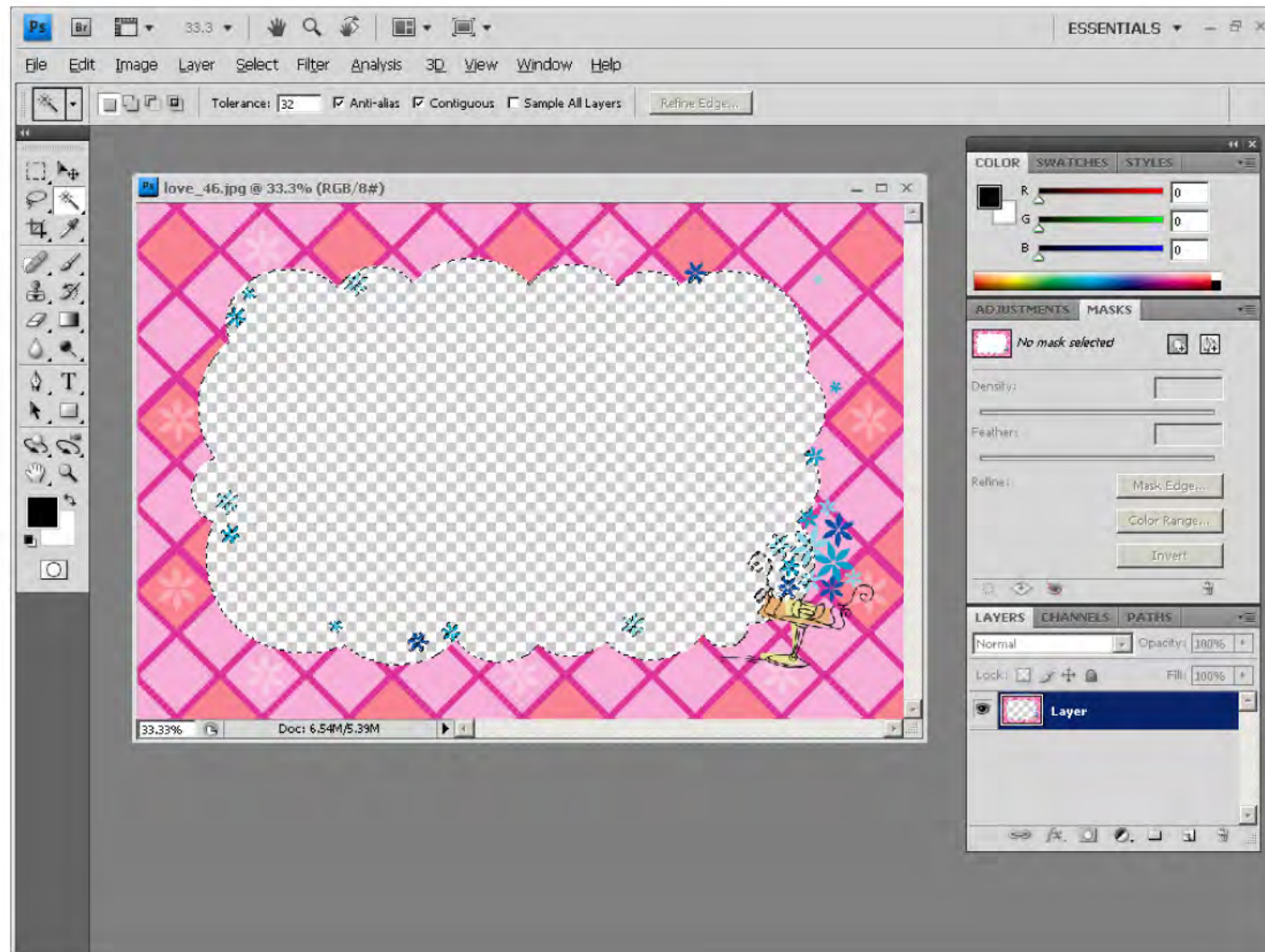


# Step 1

## Create an eFrame

### 1.2 eFrame format

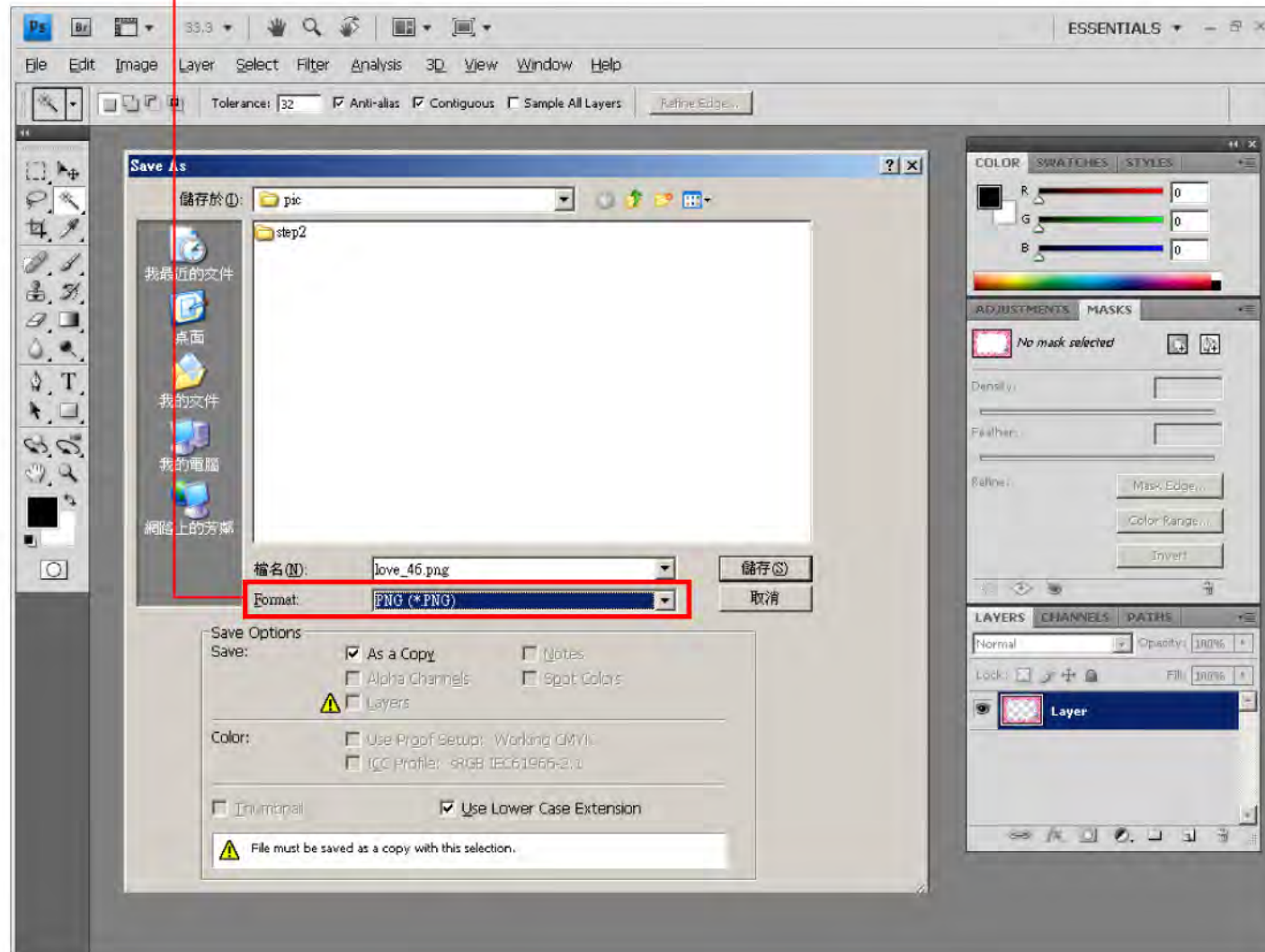
- ④ The transparent area after deleting the background color.



# Step 1 Create an eFrame

## 1.2 eFrame format

- 5 Save eframe in PNG format to your memory card or media storage.





## Step 2 Bring the eFrame to Printer



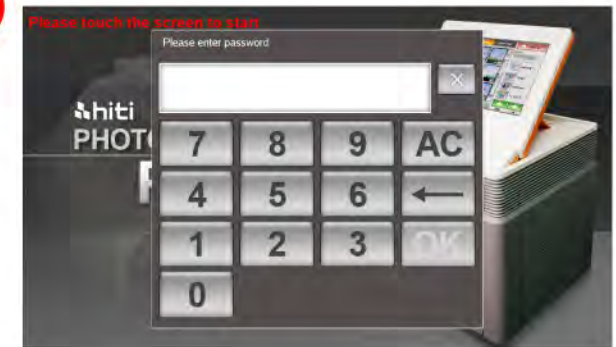
### 2.1

Insert the memory card or media storage to P510K.



### 2.2

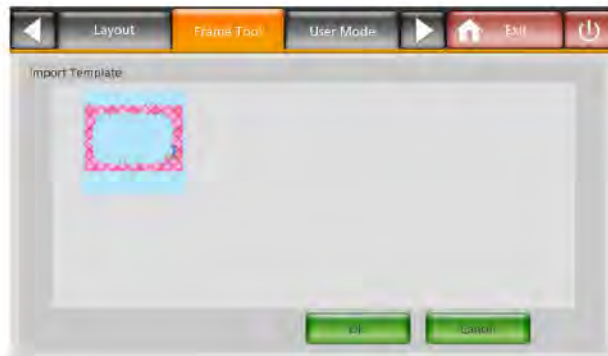
Touch the screen top right to log in system back-end.



### 2.3

Input the pin number on the pop-up window, touch **OK** (Default pin number is 1234.)

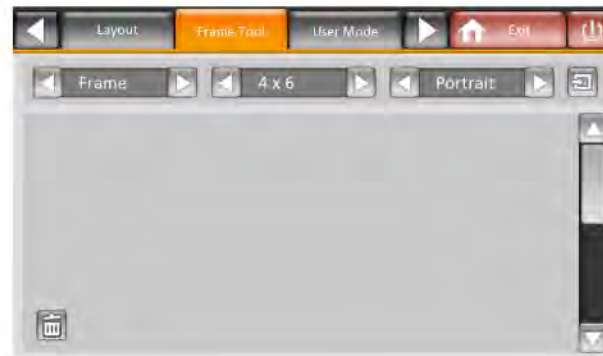
## Step 2 Bring the eFrame to Printer



### 2.4

Select [Frame Tool]\* from the top menu.

\*Frame Tool is only applied in Firmware v.1.4.6 and its following versions.




### 2.5

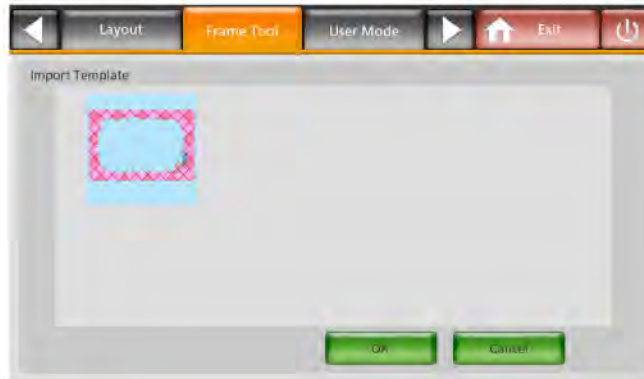
Set up:

- Select size : 4x6 / 5x7 / 6x8 / 6x9
- Select "Landscape" or "Portrait"

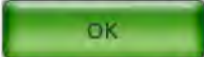
### 2.6

Touch , the compatible size template(s) from your memory card will be displayed on the window.

## Step 2 Bring the eFrame to Printer




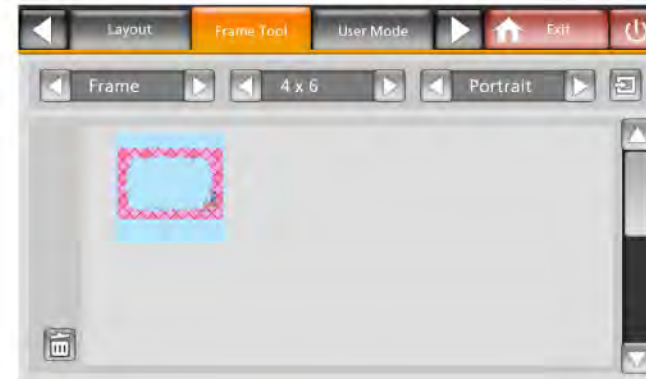
2.7

Select template(s)\*, touch  and the uploaded template(s) will be displayed.

\* Templates could be multi-selected.

\* Delete selected template(s):

You can delete any frames you uploaded by touching , However, the system default templates are not allowed to be deleted.



2.8

Done.



## Step 3 Photo Finishing with eFrame on



### 3.1

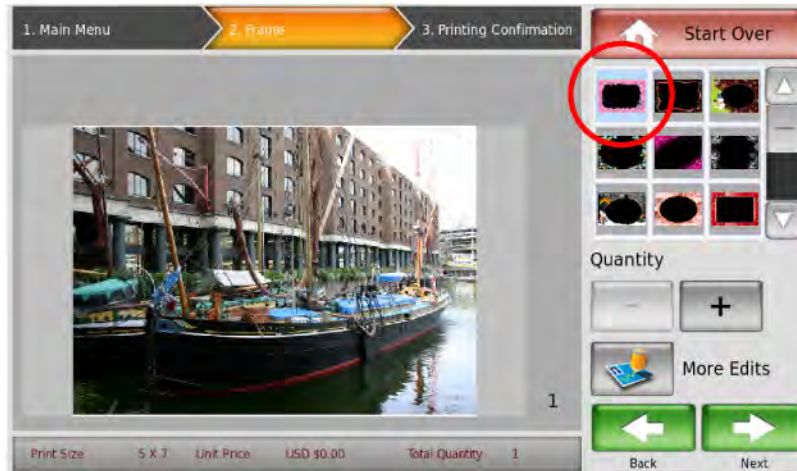
Select [Frame] from the main menu.



### 3.2

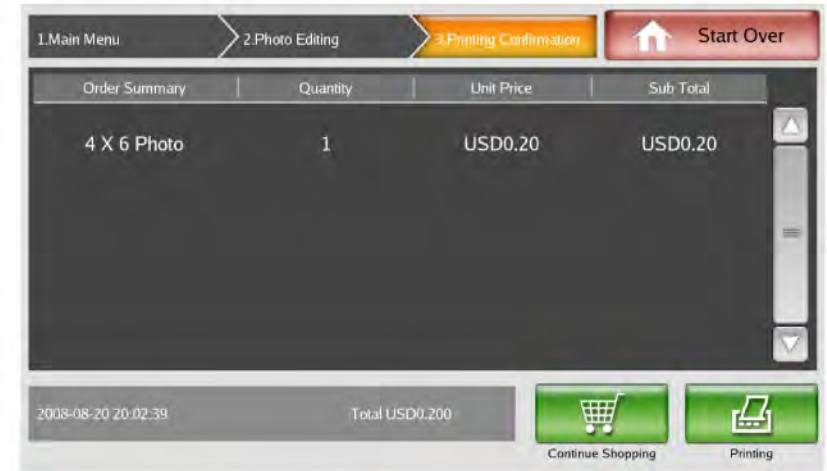
Browse your image device, and select the one you want to add on a frame.

## Step 3 Photo Finishing with eFrame on



### 3.3

You can see the template(s) just uploaded on the right window.



### 3.4

Click [Next]  review your order and then click [Printing]  to start the printing job.

### 3.5

Done.